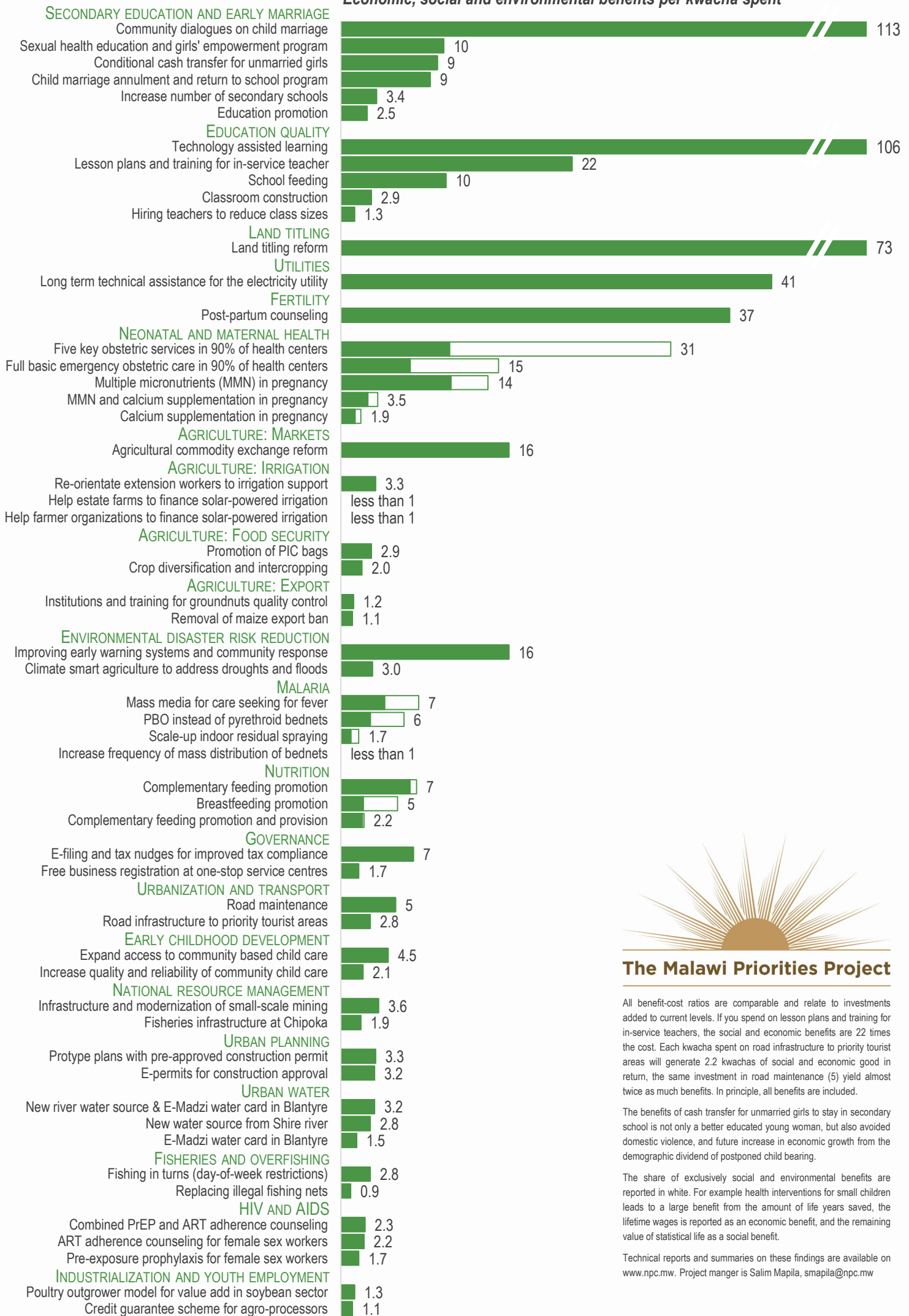


Economic, social and environmental benefits per kwacha spent



The Malawi Priorities Project

All benefit-cost ratios are comparable and relate to investments added to current levels. If you spend on lesson plans and training for in-service teachers, the social and economic benefits are 22 times the cost. Each kwacha spent on road infrastructure to priority tourist areas will generate 2.2 kwachas of social and economic good in return, the same investment in road maintenance (5) yield almost twice as much benefits. In principle, all benefits are included.

The benefits of cash transfer for unmarried girls to stay in secondary school is not only a better educated young woman, but also avoided domestic violence, and future increase in economic growth from the demographic dividend of postponed child bearing.

The share of exclusively social and environmental benefits are reported in white. For example health interventions for small children leads to a large benefit from the amount of life years saved, the lifetime wages is reported as an economic benefit, and the remaining value of statistical life as a social benefit.

Technical reports and summaries on these findings are available on www.npc.mw. Project manager is Salim Mapila, smapila@npc.mw

The idea behind the project

Malawi Priorities is a research-based collaborative project which seeks to identify and promote the most effective interventions that address Malawi's development aspirations. Cost-benefit analysis is the analytical tool applied to research questions of national importance confirmed by multi-stakeholder reference group.

Academic Advisory Council

- Nyovani Madise, AFIDEP
- Adamson Muula, University of Malawi, College of Medicine
- Charles Jumbe, Lilongwe University, LUANAR
- Jonathan Makuwira, MUST
- Ngeyi Ruth Kanyongolo, University of Malawi, Chancellor College
- Sostein Chiotha, LEAD
- Sloans Chimatiro, MwaPATA Institute
- Richard Mkandawire, Alliance for African Partnerships
- Patrick Kambewa, University of Malawi, Chancellor College
- Ben Kalua, University of Malawi, Chancellor College

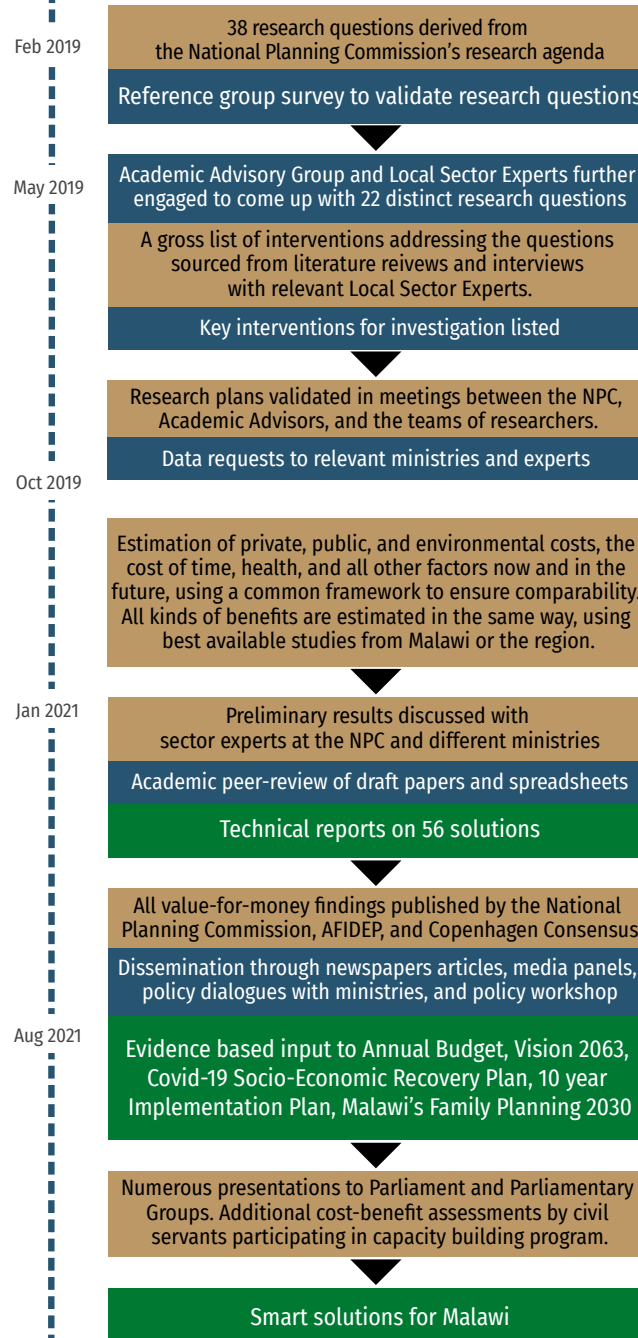
Social and economic value for money

The data has been presented and discussed in webinars and meetings with sector experts. The analyzes went through academic peer review and the findings are disseminated to relevant decision makers and the media.

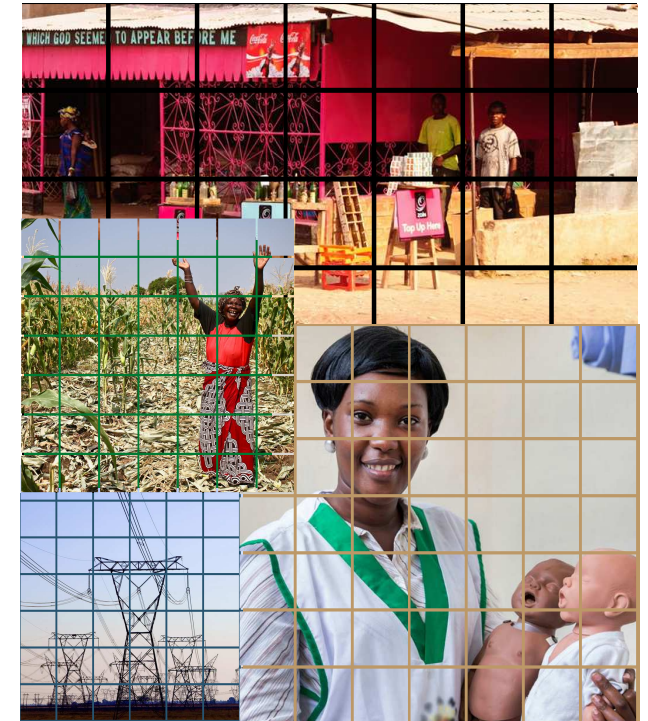


Access all the new cost-benefit research

Policy briefs and full text technical reports are available on npc.mw, afidep.org, and copenhagenconsensus.com



The Malawi Priorities Project



A systematic process to help prioritize the most effective policy solutions so as to maximize social, environmental and economic benefits on every kwacha invested.

